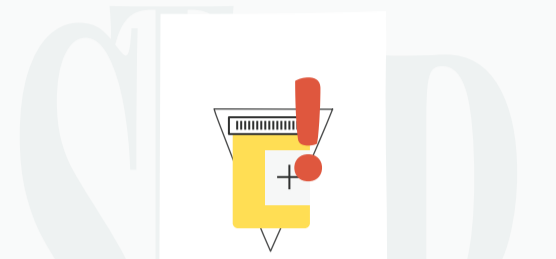


# Assured quality family planning services on a fixed day at a fixed facility

## Why use this High Impact Approach?

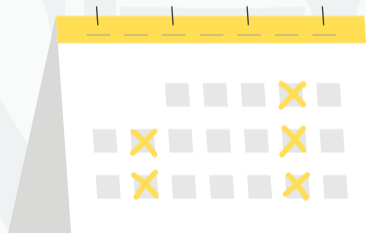
The Fixed Day Static (FDS)/Family Welfare Day (FWD) approach has been seen to increase access and availability of quality family planning services. It is a collaborative effort wherein trained human resources, equipment, commodities and supplies are made available on a pre-announced day and time known to the community.



### Step 1

#### Making FP data visible by estimating the unmet need based on available data

Data from population level studies, HMIS and project health information systems must be triangulated and discussed at both city and state level family planning monitoring meetings to amplify how health systems must focus and prioritise family planning.



### Step 2

#### Determine the schedule of FDS/FWD services

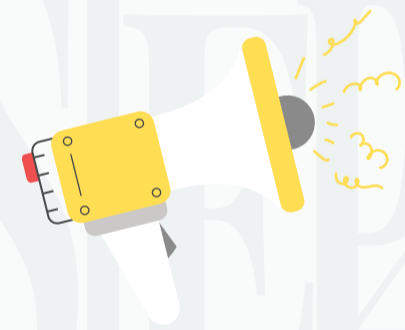
By drawing up a joint calendar of FDS/FWD services offered at hospitals, urban health facilities and accredited private facilities with proposed day, along with the details of FDS/FWD medical team. After the Civil Surgeon cum Chief Medical Officer approves the schedule and budget, widely circulate the FDS/FWD calendar among health staff and community mobilizers.



### Step 3

#### Ensure facility readiness for FDS/FWD

Ensure the availability of commodities, supplies, equipment, trained human resource, requisite reporting forms, IEC materials, in addition to electricity and water supply at the health facility. A duty roster should be created by the facility in-charge for all essential staff on the FDS/FWD team. Ensure there is sufficient budget for compensation to clients wherever applicable as per government guidelines.



### Step 4

#### Mobilize the community to participate in the FDS/FWD

Share the FDS/FWD calendar with community level workers and coach them to mobilize potential clients to seek the family planning services provided under FDS/FWD. Among community NGOs and other organisation/departments should also publicize FDS/FWD services through IEC materials with dates and venues along with the monitoring and follow-up by BTT.

For more information, refer to:

<http://tciurbanhealth.org/lessons/fixed-day-static-approach/>