



### Coordinative Mechanism and Referral System

Some examples of referral flow can be found in Figures 4, 5 and 6. An effective referral system ensures a close linkage between participating facilities and institutions at all levels. It helps to ensure adolescents receive the best possible and accessible care and services. A good referral system can help to ensure that:

- i. Clients receive optimal care at the appropriate level;
- ii. Clients who most need specialist services can access them in a timely and convenient way; and
- iii. The continuum of health, social, and other needed services by adolescents is ensured.

### Major Components of the Referral Network

In the diagram above, the referral systems mainly consists of the initiating and receiving facilities and the ISDN Coordinative or Management Structure.

The **Initiating Facility (IF)** is the first facility from which the adolescents initially sought specific information or services. If the service sought is not available in the initiating facility, the IF starts the referral process and prepares the outward referral to communicate the condition of the client with the facility to which the client shall be referred. A sample referral form is provided in Annex F.

**Figure 4. Sample AHD Referral System**

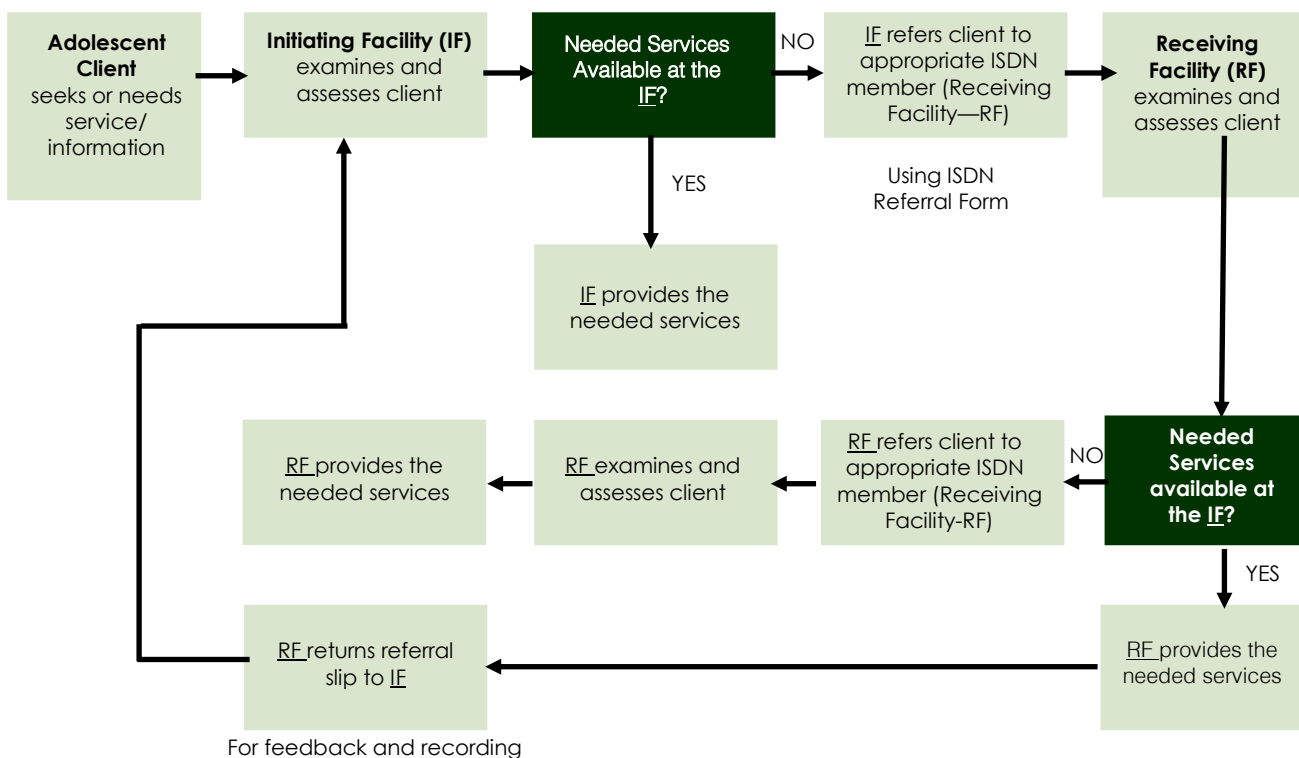




Figure 5. Sample AHD Referral System for Health Care Services

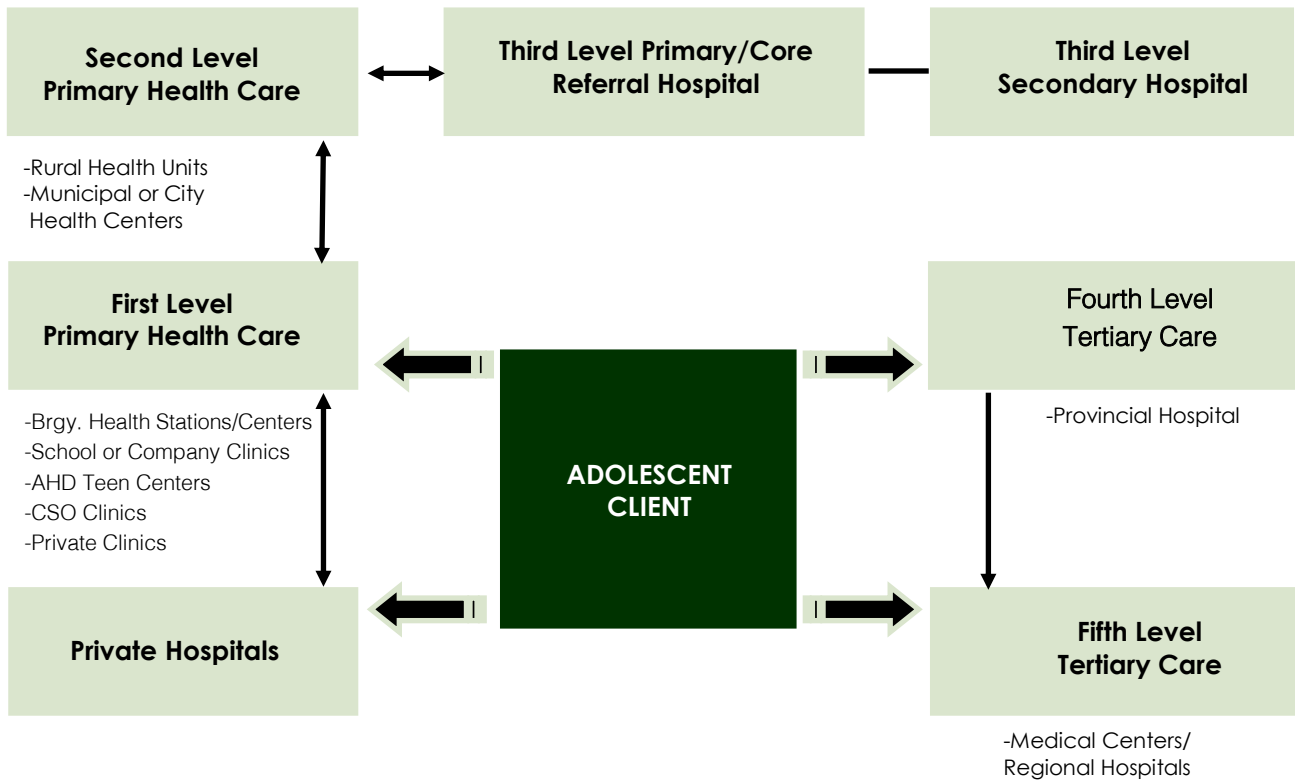


Figure 6. Sample AHD Referral System for Social Services

